



Dock Leveller



The Australian Designed
Tieman Dock Leveller by Safetech

Overview

Why choose the Safetech Dock Leveller?

The only Australian designed dock leveller built tough to suit Australian conditions

- Designed to AS3990, AS3000 and ANSI MH-30.9-2007.
- Extensive load bearing cycle testing conducted to prove design longevity.
- Design confirmed through the latest computer generated finite element analysis.
- Deck features narrowly spaced support beams (max 200mm) for superior structural integrity.
- High tensile reinforced anti-slip steel checker plate load lip offers added strength and the smoothest transition between chamfered lip edge and trailer floor.



The Australian market leader for more than 40 years

Used and proven by all major Australian retailers, transport and logistics companies.

constant improvements have been made to keep our dock levellers ahead of the rest. These include:

- Upgrading the mechanical operating system to hydraulic/electric.
- Reversing the operation of the deck cylinder to minimise wear on the rear welds.
- Various safety mechanisms including the improved one man operation maintenance prop, velocity fuse system and low voltage controls to prevent electric shock.

Peace of mind with national 24/7 service and support



Features

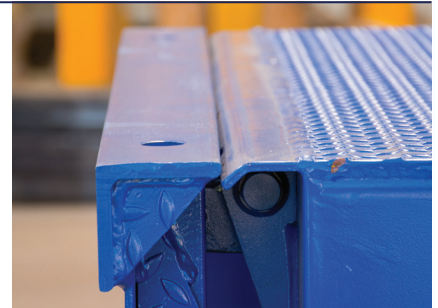
STRUCTURAL STRENGTH

- Designed to AS4100, AS0418/8 and AMSI MH-30-2007.
- Extensive load bearing cycle testing to prove design longevity.
- Simple and proven geometry. Designed to accommodate truck beds canted up to 100mm.



FULLY ENCLOSED HINGE DESIGN

- Pieces of broken pallet or other waste cannot jam in the hinge, maintaining smooth unrestricted operation.
- Reduces product damage.
- Rear Hinge provides a seamless and soft transition between the warehouse floor and dock leveller.



HYDRAULICS

- Deck floats on hydraulics. Adjusts to match trailer height during loading or unloading.
- Smooth and quiet hydraulic power unit located under dock.



Safety

MAINTENANCE PROP – INTRINSICALLY SAFE

- Engaged and disengaged by a single person from the upper dock level without needing to reach under the Dock Leveller.
- Stays in place if the deck is accidentally impacted.
- Provides a lockout facility with visual confirmation.
- Securely supports both the deck and lip for safe servicing.
- Reduced servicing costs (only need 1 person to service).
Most other designs require servicing by 2 persons.



FORWARD MOUNTED COMPONENTS

- Reduces technician fatigue by bringing all components within arms reach.
- Allows ease of access for maintenance, cleaning or repair.
- Removal of unnecessary cabling and other components.
- No need to enter the often dirty, unsanitary, confined space for simple servicing and periodical inspection.



DURADOCK™ – 2 PART COMPOSITE DOCK BUMPERS

- Long lasting high impact protection for docks and trucks.
- Superior low friction contact surface .
- Revolutionary design with shock absorbing backing material.
- Lightweight, can be easily retrofitted to existing docks.
- Specification: 250W x 460H x 100D Weight: 9.0 kg each.



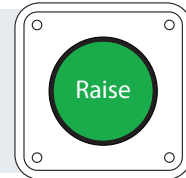
OPERATION

- Constant pressure button. This prevents accidental injury to personnel or damage to surrounding objects.
- Small enclosure (70W x 70L x 50D) mounted on wall giving more room for other services on an often crowded internal dock wall.
- Low voltage control minimises the risk of electrical shock and ease of interlocking with all types of dock door systems.



Operation

The Safetech Dock Leveller can be operated by just 1 button.
(2 button independent lip controls optional)



TO ENGAGE THE DOCK LEVELLER

- **Push and hold the button**
 - Deck raises
 - The Load Lip will then fold out

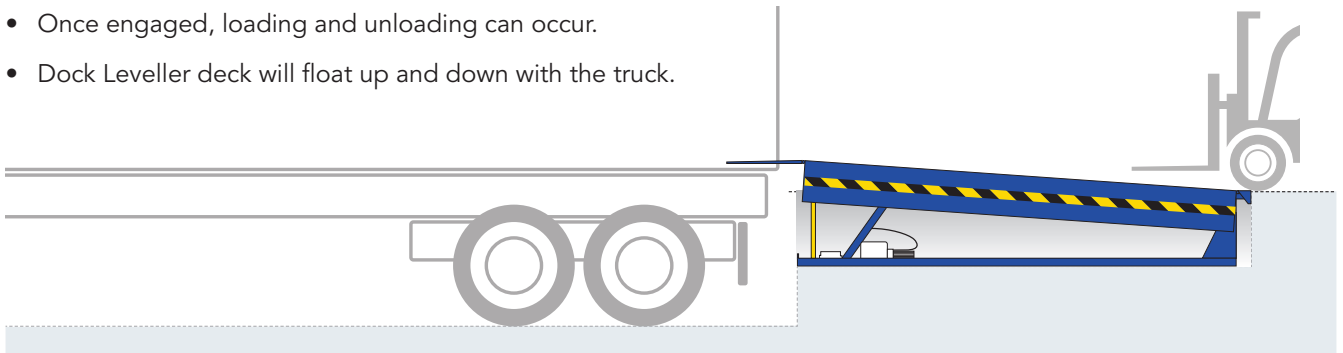


- **Release the button**
 - Deck lowers onto the truck bed with the Load Lip extended.



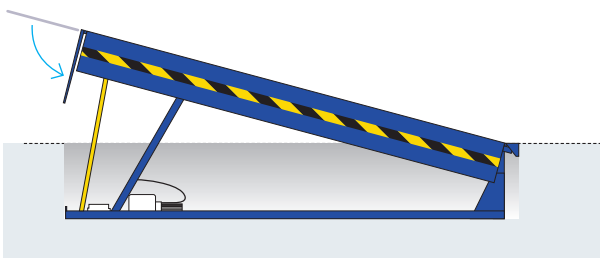
LOADING AND UNLOADING

- Once engaged, loading and unloading can occur.
- Dock Leveller deck will float up and down with the truck.



TO STOW THE DOCK LEVELLER

- **Push and hold the button**
 - The deck will raise until the Lip has retracted.



- **Release the button**
 - The deck will lower to the stowed position.



Specifications

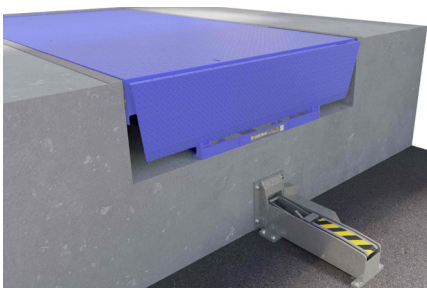
STANDARD MODELS

(nominal specifications)	DL703	DL708	DL710	DL712	DL714
Static Capacity kilograms	7,000	12,500	12,500	12,500	12,500
Deck Width (mm)	2110	2110	2110	2110	2110
Deck Length (mm)	600	2210	2820	3440	4040
Lip Length (mm)	490	490	490	490	490
Nominal Travel Up (mm)	350	750	750	1000	1075
Nominal Travel Down (mm)	75	180	180	180	180
Travel Up at 10% Gradient (mm)	60	210	275	335	400
Travel Up at 15% Gradient (mm)	-	310	410	500	600

COMPONENTS

Power Unit	1.1kW / 415V / 3 Phase / 10A / 50 Hertz
Power Requirement	415V / 3 Phase / 10 Amp 5 Pin Switched Outlet, protected by a D Curve circuit breaker
Controls	Low voltage 24V AC wall mounted controls
Side Guards	Full Range Hi Visibility Telescopic Side Protection Powder Coated for durability
Product Finish	Blue Industrial Spray Enamel, Leveller Structure primed with anti-rust undercoat

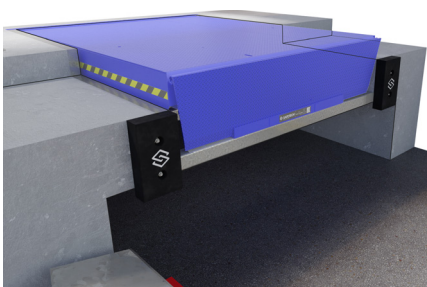
MOUNTING OPTIONS



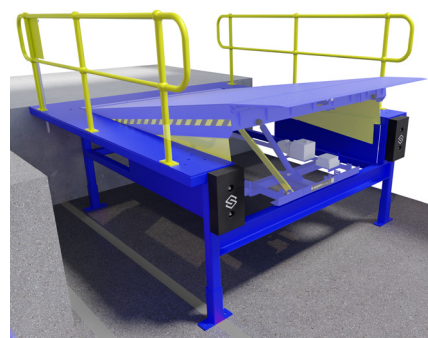
Standard Pit Mount



Face Mounted Frame



Step-down & Tailgate Provision Pit



Free Standing Frame

Options

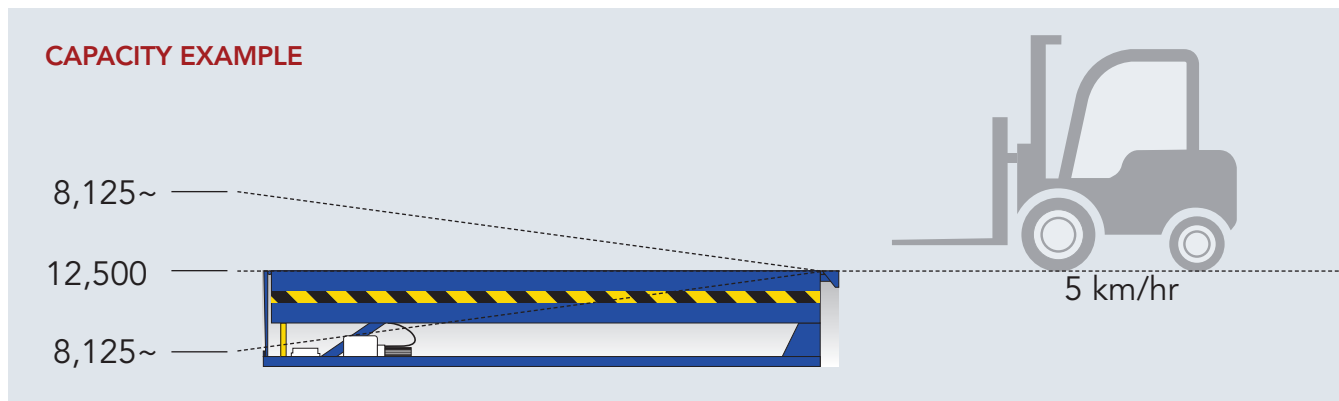
HYDRAULIC DOCK LEVELLER CAPACITY

To assess the required capacity, all Safetech Dock Levellers have a rated static capacity, which is measured when the Dock Leveller is stowed.

Safetech Dock Levellers are market leaders in their safe operating dynamic load capacities, which is approximately 65% of the rated static capacity.

These measurements assume that any forklift or loader does not exceed 5km/hr and the operating grade does not exceed 10%.

For conditions which exceed these standards, please contact Safetech for your individual requirements.



* Higher capacity levellers available based on gross fork / load weights, servicing gradients, speed and usage frequency

OPTIONS

Independent Lip Control	Dual push button panel – “Dock Raise” and “Lip Raise”
Custom Sizes	For replacements and where spatial issues exist
Seal Strips	Brush or rubber side pit seals for environmental and vermin control
Single Phase Power Pack	Single phase / 240V / 50 Hertz power unit available
Modified Base Frame	To suit deep or shallow pit installations
Heavy Duty Models	For Heavy Duty applications (e.g Paper Industry). Contact Safetech to discuss
Steel Faced Dock Bumpers	Dock Defender™ Steel faced bumpers for extra strength, durability and protection.
Custom Finishes	For corrosive environments, hot dipped galvanised & marine grade non slip surfaces
Self Supporting	Pitless frames
Interlocking	Dock door interlocking provision standard
Controls Panels	Integrated control panels for sequencing with other dock equipment

Further information

Contact your local Safetech sales representative for a copy of our Dock Products, Palift or Lift Tables brochures.



DOCK PRODUCTS BROCHURE

For more information about our full range of Dock Products, including popular items such as:

- Shelters
- Seals
- Wheel and Trailer Restraints
- Pit Box's
- Control Panels
- plus much more.



PALIFT BROCHURE

The Australian designed Palift is the original and most popular Safetech Product.

Also used in dock loading and unloading, it leads the way in the materials handling industry, being utilised by most major retailers and supermarket chains.



LIFT TABLES BROCHURE

Safetech design and manufacture a wide range of static, mobile and heavy capacity scissor lifts.

The Lift Tables brochure has all the critical information you need to choose the right lifting solution for your business.

